

NORTH-WEST QUARTER

PARKMAN T.P.

NORTH-WEST QUARTER

BURTON TP.

M I D D L E F

D. C. ...



S H I P
T O W N
Y O R O

1409 2/28
431 7/50
289 8/33
333 309 054
333 Ac
350.46
375
5544

38.02
12.10
5.61
10.09
65.66

2613
12546
10452
13065
13065
14491 678
5.31
31.86
318.6
350.41

300
11212
1661
2222.2
2711.65

1674
1544.5
2222.2
354.0
2711.65

306
107.6
413.6

3.50
333.6
333.6
333.6

402.6
277.6
680.2

111
517
754

13
660
2.5
3300
1320
1450.0

905
1052.6
1452.6
1735.6
5274.0
3252.45

306
107.6
413.6

3.50
333.6
333.6
333.6

402.6
277.6
680.2

111
517
754

13
660
2.5
3300
1320
1450.0

905
1052.6
1452.6
1735.6
5274.0
3252.45

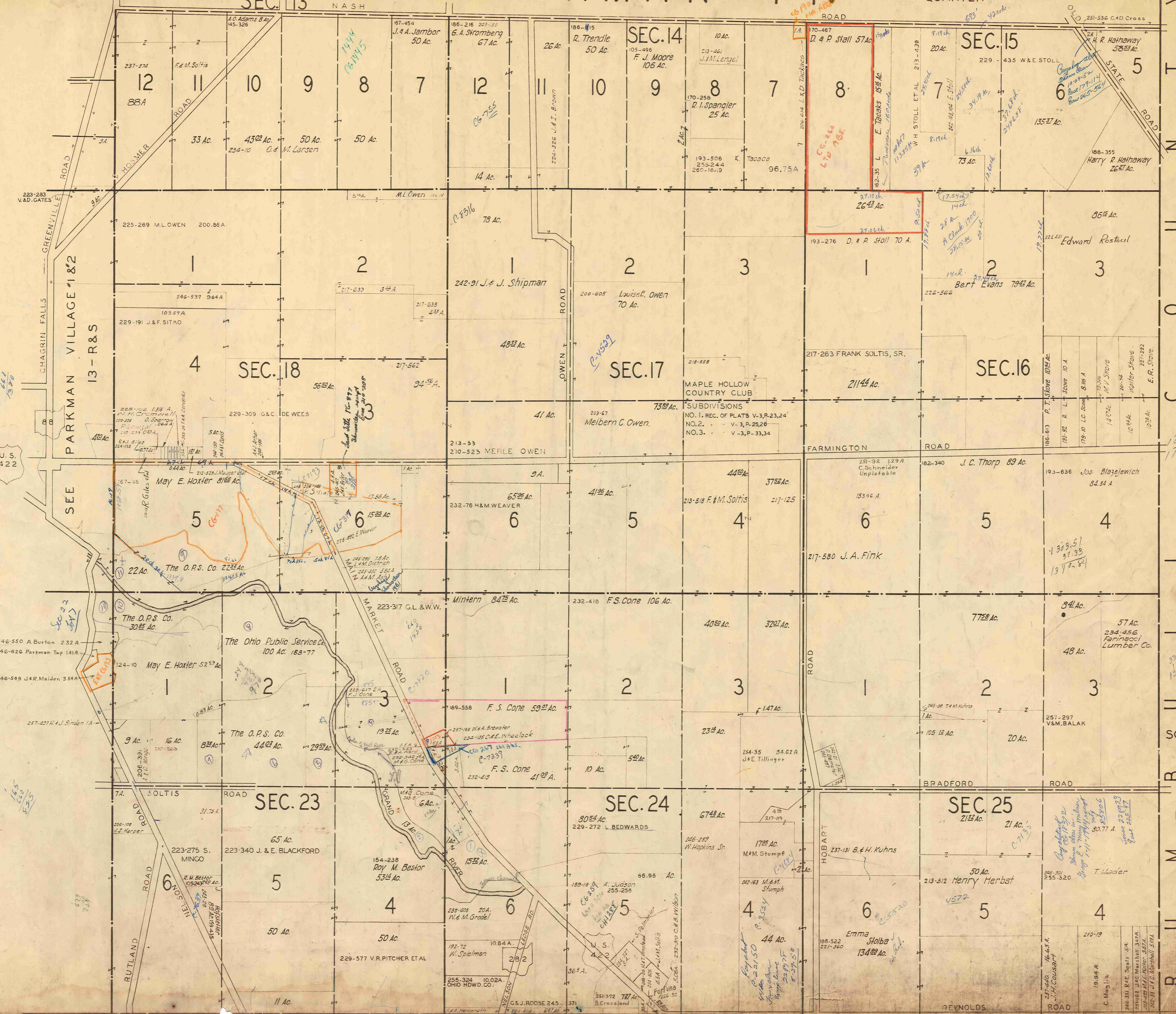
SCALE 1 in. = 10 CH

MAR 1, 1954

PARKMAN TWP

SEC. 13

SOUTH-EAST QUARTER



88

Y

T

N

O

U

C

L

L

J

B

M

U

R 13 S.E.

SCALE 1 IN = 100

MAR. 1, 1954

17.14

10284

10254

13124

330.00

1320

37.35

1370.81

57 Ac.

234-456

Farinacci

Lumber Co.

48 Ac.

257-297

V&M. BALAK

20 Ac.

105.12 Ac.

7758 Ac.

84.84 A

193-636

Jos. Blazewich

88 Ac.

182-340

J. C. Thorp

251-92

129 A

C. Schneider

Unplatable

217-125

3752 Ac.

213-518

F. M. Soltis

442 Ac.

203-67

Melbern C. Owen

7388 Ac.

218-558

MAPLE HOLLOW

COUNTRY CLUB

SUBDIVISIONS

NO. 1. REC. OF PLATS V-3, P-23, 24

NO. 2. V-3, P-25, 26

NO. 3. V-3, P-33, 34

217-263

FRANK SOLTIS, SR.

21144 Ac.

226-566

Bert Evans

7942 Ac.

192-221

Edward Rostick

366 Ac.

188-355

Harry R. Hathaway

2627 Ac.

229-435

W & E STOLL

SEC. 15

8.15 Ac.

20 Ac.

170-467

D. & P. Stall

57 Ac.

10 Ac.

105-496

F. J. Moore

106 Ac.

213-461

J. M. Lengel

26 Ac.

186-415

R. Trendle

50 Ac.

186-216

203-155

G. A. Stromberg

67 Ac.

67-454

J. & A. Jambor

50 Ac.

A. D. Adams

8 Ac.

145-326

SEC. 14

237-374

F. & M. Soltis

33 Ac.

234-10

O. & M. Larsen

50 Ac.

50 Ac.

50 Ac.

50 Ac.

50 Ac.

50 Ac.

50 Ac.

50 Ac.

50 Ac.

50 Ac.

50 Ac.

50 Ac.

50 Ac.

50 Ac.

50 Ac.

50 Ac.

50 Ac.

50 Ac.

50 Ac.

50 Ac.

50 Ac.

50 Ac.

50 Ac.

50 Ac.

50 Ac.

50 Ac.

50 Ac.

50 Ac.

50 Ac.

50 Ac.

50 Ac.

50 Ac.

50 Ac.

50 Ac.

50 Ac.

50 Ac.

50 Ac.

50 Ac.

50 Ac.

50 Ac.

50 Ac.

50 Ac.

50 Ac.

50 Ac.

50 Ac.

50 Ac.

50 Ac.

50 Ac.

50 Ac.

50 Ac.

50 Ac.

50 Ac.

50 Ac.

50 Ac.

50 Ac.

50 Ac.

50 Ac.

50 Ac.

50 Ac.

50 Ac.

50 Ac.

50 Ac.

50 Ac.

50 Ac.

50 Ac.

50 Ac.

50 Ac.

50 Ac.

50 Ac.

50 Ac.

50 Ac.

50 Ac.

50 Ac.

50 Ac.

50 Ac.

50 Ac.

50 Ac.

50 Ac.

50 Ac.

50 Ac.

50 Ac.

50 Ac.

50 Ac.

50 Ac.

50 Ac.

50 Ac.

50 Ac.

50 Ac.

50 Ac.

50 Ac.

50 Ac.

50 Ac.

50 Ac.

50 Ac.

50 Ac.

50 Ac.

50 Ac.

50 Ac.

50 Ac.

50 Ac.

50 Ac.

50 Ac.

50 Ac.

50 Ac.

50 Ac.

50 Ac.

50 Ac.

50 Ac.

50 Ac.

50 Ac.

50 Ac.

50 Ac.

50 Ac.

50 Ac.

50 Ac.

50 Ac.

50 Ac.

50 Ac.

50 Ac.

50 Ac.

50 Ac.

50 Ac.

50 Ac.

50 Ac.

50 Ac.

50 Ac.

50 Ac.

50 Ac.

50 Ac.

50 Ac.

50 Ac.

50 Ac.

50 Ac.

50 Ac.

50 Ac.

50 Ac.

50 Ac.

50 Ac.

50 Ac.

50 Ac.

50 Ac.

50 Ac.

50 Ac.

50 Ac.

50 Ac.

50 Ac.

50 Ac.

50 Ac.

50 Ac.

50 Ac.

50 Ac.

50 Ac.

50 Ac.

50 Ac.

50 Ac.

50 Ac.

50 Ac.

50 Ac.

50 Ac.

50 Ac.

50 Ac.

50 Ac.

50 Ac.

50 Ac.

50 Ac.

50 Ac.

50 Ac.

50 Ac.

50 Ac.

50 Ac.

50 Ac.

50 Ac.

50 Ac.

50 Ac.

50 Ac.

PARKMAN VILLAGE NO. 1

SEC. 12 SEC. 13
SEC. 19 SEC. 18

168

88

205-467 BOY SCOUTS OF AMERICA, TRUMBULL COUNTY COUNCIL, INC.

208-249 9.37 A

232-7 W.H. Sluzjerski 5.37 A.

229-405 N & J. DOBAY 1.52 A.

117

237-426 M. E. Sucheski 10 A.

232-520 .215 A
R. W. Pfeiffer

232-432
11 Taylor
.21 A.

V. D. & B. GATES
225-263 6.65 A.

118

Z.A.
255-428
W.R. COUN. B.S.A.

1.A.
242-26 H. Hayes

3rd A.
245-210 P. MURRAY

40

203-535 ; 233-269
V. A. Hosmer et al. 54th Ac.

E. & F. Carlton 7

3 A.
217-536 B. & E.
BROOK

.53 A.
254-229
246-82 .06 A.
G. E. Brutenbach

1st A.
19 Ac.

1st A.
19 Ac.

0.38 Ac.

1st A.
111 Ac.

132

210-605
L. S. PACE, ET AL.

232-119 0.91 A
J & J. QUINN

225-269 M. LOWEN

119

200th Ac.

BURTON ROAD

ROAD

210-389 FRANK SOLTIS

SECTION 19

120-552 4th Ac.

115

43

Handwritten calculations:
126
125
124
123
122
121
120
119
118
117
116
115
114
113
112
111
110
109
108
107
106
105
104
103
102
101
100

203-234 Dorothy Brainerd

202nd Ac.

114

262-564

39

70-441 CEMETERY

246-486 0.91 A.
S & M Leman

239-9 M. Leman

201-168
8th Ac.

188-237 Belle Fernon
3 Ac.

1 Ac.
Ruby Komend't

Frank Soltis, Jr.

234-523 .5 A.
M. Giles

212-585 .5 A.
H. Norton

232-185
C & V. WARNER
122 6.2 A.

121

Handwritten notes:
Hilda Ruth Nelson
Cuyahoga shows
plan 7-31-49
except map 101074
15576

254-507 F & H. CONE

38

226-477 F. & A. Vest

2.02 A.

110

109

108

107

106

105

104

0.67 Ac.

0.88 Ac.
217-393
W. H.
Burton

0.67 Ac.
(Dupl.)

0.15th A.

0.50 Ac.
206-265

203-353

243 Ac.

213-371
BD. OF EDUCATION

SCHOOL
37

Parkman Bd. of Education 2 Ac. Mabel Baird
179-429 123 2nd Ac.

124

HIGH ST. PARKMAN

VILLAGE

NO. 2

SCALE 1"=2.5 CH.=165 FT.

MAR. 1, 1954

13-R

